

# *fi-6800*



## **New Fast A3 Image Scanner**

### **Best Cost/Performance ratio in MVP~Class**

The fi-6800 is developed to provide a revolutionary solution for improvement on automation, productivity, reduction of cost and contribution to the environment

1. Incredibly fast scanning: 130 ppm / 260 ipm
2. A new compact design that's sure to please operators and go easy on the environment
3. New functions that boost automation, power efficiency and increase productivity



✓ **Incredibly fast scanning**



The Fujitsu fi-6800 offers fast 130ppm/260ipm, A4 landscape size colour scanning with a device that has been developed with a completely new and unique compact design. With both unique image handling hardware and hardware accelerated "VRS Professional" factory-mounted, the user receives a complete high performance capture solution right out of the box. Operators will begin making professional grade scans in no time. A new scanner with superior cost performance enters the market.

✓ **A new compact design that's sure to please users**

Utilizing a high quality lens and extra-bright LED light source enclosed in a heavy-duty resin frame, the fi-6800's new compact design makes it the smallest document scanner in its class. <sup>\*1</sup>  
(The fi-6800 takes up 53% less space and is 72% lighter than its predecessor.)

<sup>\*1</sup> Applies to business scanners priced between € 8.000 and € 25.000. (as of Aug. 1, 2009)

✓ **Supporting the operator**

- The fi-6800 is ergonomically designed to support scanning whether the operators are standing or seated
- Scanner status and settings are presented and changed on an easy to navigate LCD panel
- Simple but very sturdy construction with a wide flip-up cover for easy access and obstacle-free cleaning
- Near silent operation allows for back office and front office placement in support of a multitude of professional business scanning tasks



## Preliminary Features


# fi-6800



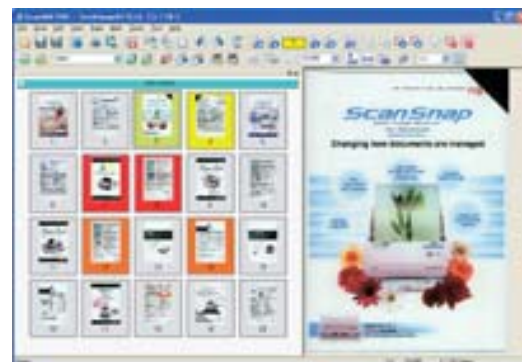
- ✓ **Going Easy on our environment (Green IT)**
  - Constructed using minimum quantities and lightweight raw materials
  - Short recovery time from the extra-bright LED light source (within 6 seconds)
  - Low power consumption when in sleep mode (\*2) (less than 4W)

*\*2 Without CGA board interface*

- ✓ **New functions that boost automation, power efficiency and increase productivity**  
The fi-6800 supports new automatic functions that make scanner operating tasks even easier, faster and more energy efficient. With high speed scanning, you will see your work productivity jump leaps and bounds.

- **Route files with ease by utilizing Patch Code and Barcode supported Job separation**  

 fi-6800 features patch code and barcode recognition functions which utilize patch code sheets or attached barcode labels. Whenever detected, files can be automatically routed to new subdirectories for expediting and automating post capture processing routines. In case of using barcodes, the files and directories can even be named according to the barcode encapsulated information. Combined with the image capture software ScandAll PRO's "Automatic Sorting" function, scanning / sorting / saving is all hands free.

- **Reduce the hassle of post-scan tasks with "Automatic Stacker" and "Automatic Image Quality Checker"**  
Automatic Stacker ensures all your scanned documents are stacked neat and tidy while an Automatic Image Quality Checker detects any image irregularities (folds or tears in the scanned document) after scanning. Post-scan tasks have never been this easy.



- **An excellent paper-feed mechanism that guards against document damage and misaligned document feeds**  
Fujitsu's fi-6800 features a very reliable paper-feed mechanism which is derived from Fujitsu's top-of-the-line fi-5900C model. Utilizing fi-series' renowned "Paper Protection" Function and "Multifeed Protection" Function, paper feed problems are tackled before they happen. This brings optimum workflow to your business. And it ensures maximum uptime for the scanner, increasing operational efficiency.